

BONDI FEAST

TECHNICAL INFORMATION PACK

2019
TECHNICAL
INFORMATION PACK

General info

This pack contains all the technical information you will need should you be programmed as part of Bondi Feast 2019. Please take the time to read through this information, as the technical capabilities of each of the spaces may determine which space you wish to use.



GETTING HERE

BONDI FEAST IS HELD WITHIN THE BONDI PAVILION, BONDI BEACH.

All venues are located either on the Pavilion Ground Floor, Pavilion Level 1, or in the Festival Garden behind the Pavilion.

Bondi Beach is a heavy traffic area. There is no allocated parking but there are many options close by.

BONDI PAVILION



CAMPBELL PDE

BEACH RD

WARNERS AVE



TRAIN

Eastern Suburbs line to Bondi Junction

BUS ROUTE

- Bus - 333 Circular Quay via Oxford St & Bondi Junction to Bondi Beach return
- Bus - 380 Circular Quay via Oxford St & Bondi Junction to Bondi Beach return
- Bus - 381, 382 & X84 Bondi Junction to Bondi Beach

By prior arrangement, approval may be given for access to vehicles for equipment drop off/pick up

CAR PARKING

There is metered parking at Bondi Beach Car Park, entry via Campbell Pde.

During winter (June – August) meter-parking rates are approximately \$7.20/hr
FREE from 7pm-10pm.

Please see guide of parking rates at the following link:
waverley.nsw.gov.au



BONDI FEAST 2019

VENUE

- BIG THEATRE** (145pax)
- LITTLE THEATRE** (40 pax)
- MINI THEATRE** (30 pax)
- BALLROOM** (40-250 pax)
- GALLERY** (50-80 pax)
- PARLOUR TENT** (80-100pax)

STAFFING & SCHEDULING

Technical Staff will be on site to assist you with bump-in and plot/tech sessions. Depending on your requirements a suitable length of technical time in the theatre will be scheduled. This can usually be accomplished in two hours on the day of the first performance. A full bump-in and technical schedule will be drawn up with you in advance and a final schedule distributed to all once confirmed. The lighting and sound will be operated by a Bondi Feast SM/Operator (unless you would like to arrange otherwise prior to bump-in). For plotting please mark all scripts with cues – cue in and out points, marking whether it is a fade or snap, etc. This will assist in expediting the plotting.

WORKPLACE HEALTH & SAFETY

Bondi Feast are committed to workplace health and safety. Ensuring the health and safety of all is a shared responsibility between the producing company, the venue and all workers and contractors. All who are involved in providing services and/or performing must ensure that at all times their activities and equipment are not likely to result in damage to themselves, to others, or their working environment. All electrical equipment must be tested and tagged in date in accordance with AS/NZS 3760 standard, and checked with technical team prior to use.

The Bondi Pavilion is operated by Waverley Council. Waverley Council has developed an Emergency Plan detailing Emergency Procedures to cope with likely emergency scenarios. In an emergency, please follow the instructions of your Stage Manager or the FOH Manager. Warning systems are managed by the Waverley Council staff members on-site.

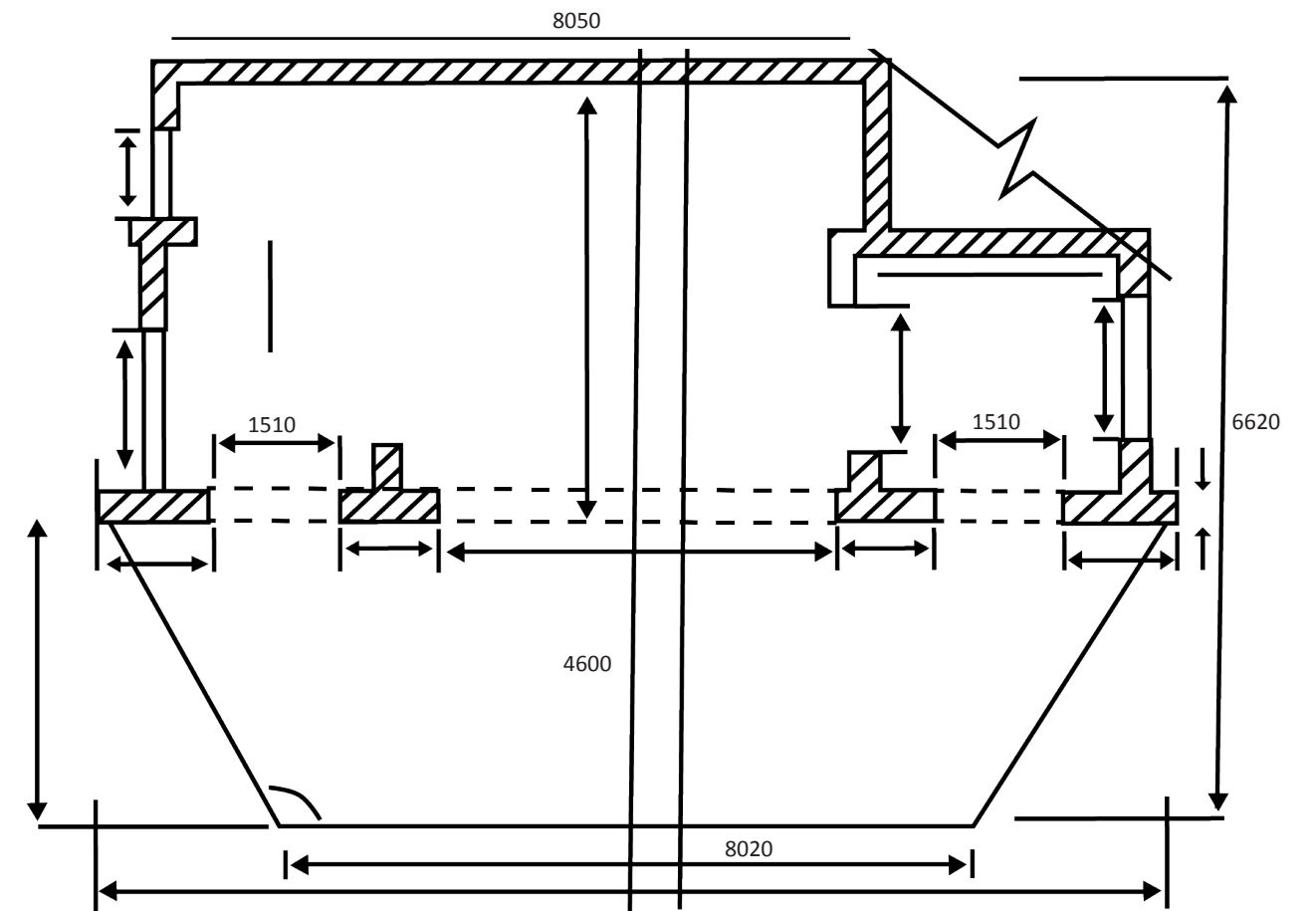
GENERAL INFO

Your team will have shared use of one dressing room with showers and a kitchenette. There are no laundry facilities within the Bondi Pavilion. Please note, you are responsible for your own personal effects, rubbish and dishes. Please let us know if you require secure storage for valuable pieces of equipment.

ACCESSIBILITY

Bondi Feast strives to ensure that all artists and patrons have a great time at our festival and in our venues. If you require more info on Bondi Feast's accessibility, or have any accessibility questions please get in touch.

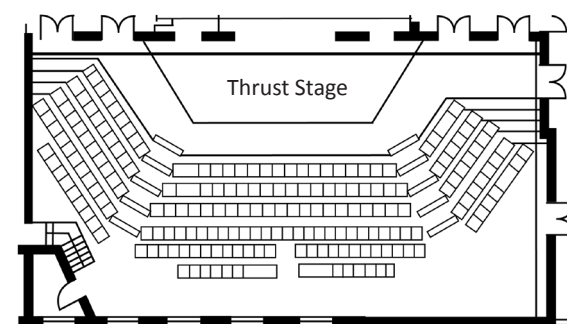
THEATRE SPECIFICATIONS ARE DETAILED ON THE FOLLOWING PAGES



BIG THEATRE STAGE DIMENSIONS

BIG THEATRE SPECIFICATIONS

The Big Theatre contains 145 seats in the central seating bank. It is standard practice that the two side-seating banks be blocked off for Bondi Feast seasons. In certain occasions, the festival may include the side seating banks, making it a 220 seat theatre. The main playing area is the thrust beyond the proscenium. This area is 3.7m in depth, 12.5m wide upstage and 8.02m wide downstage. There are two additional onstage entrances. The proscenium and these two entrances can be left open or closed with existing curtains (black). The theatre will be left in the black box state so any design elements will need to be brought in by your team and discussed prior to bump-in. Depending on programming requirements, your set may also have to be bumped out of the space every night.



Seating map

PRODUCTION AND TECHNICAL

STANDARD LIGHTING RIG

A standard lighting rig with DMX control will be provided with a cool and warm open stage wash. Additional lighting equipment requirements are to be detailed in your tech requirements form.

STANDARD AUDIO RIG

The theatre has a full front of house sound system with the following audio equipment installed:

- 1 x 16 Ch Soundcraft Spirit M8 Mixer
- 2 x Mackie Thump 15 1000w Speakers
- 1 x JBL Eon Powered Speaker
- 1 x Mic AKG C535 EB Condenser mic
- 1 x Shure PG58 hand held radio mic
- Mackie DL0816 LT DigitalMixing console
- Shure Beta58 hand held radio mic

A line input will be provided to run sound through, If you require additional hardware to run your audio please ensure this is requested in your technical request form.

Additional audio equipment and microphones may be arranged if requested, although the festival can make no promises in this regard.



LITTLE THEATRE SPECIFICATIONS

The Little Theatre will contain 40 seats in end-on stage configuration. A small raised stage will be set at the far end of the room and the tech desk set up behind the door on the left as you walk into the space.

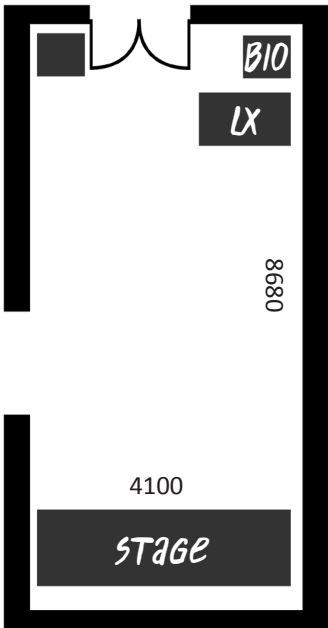
PRODUCTION AND TECHNICAL

STANDARD LIGHTING RIG

There will be 4 x DMX controlled LED LX wash lights installed on LX trees at the back of the room this will allow for basic scene changes and a warm/cool wash. Additional lighting equipment requirements are to be detailed in your tech requirements form.

STANDARD AUDIO RIG

The theatre has a small PA system, with corded microphone and line-in playback. Additional audio equipment and microphones can potentially be arranged if requested.



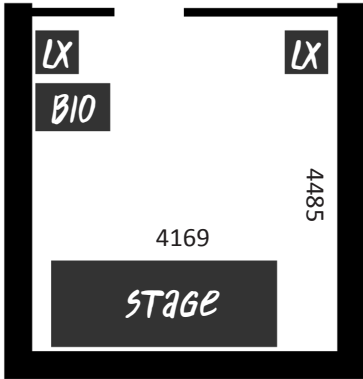
MINI THEATRE SPECIFICATIONS

The Mini Theatre will contain 30 seats in end-on stage configuration. A small raised stage will be set at the far end of the room and the tech desk set up behind the door on the left as you walk into the space.

PRODUCTION AND TECHNICAL

STANDARD LIGHTING RIG

There will be 4 x DMX controlled LED LX wash lights installed on LX trees at the back of the room this will allow for basic scene changes and a warm/cool wash. Additional lighting equipment requirements are to be detailed in your tech requirements form.



STANDARD AUDIO RIG

The theatre has a small PA system, with corded microphone and line-in playback. Additional audio equipment and microphones can potentially be arranged if requested.





Ballroom SPECIFICATIONS

The Ballroom can accommodate up to 250 people in a variety of configurations. Examples of configurations include theatre-in-the-round, roaming theatre, traverse, end-on configuration, or cabaret-style table seating (tables requirements are to be detailed in your tech requirements form).

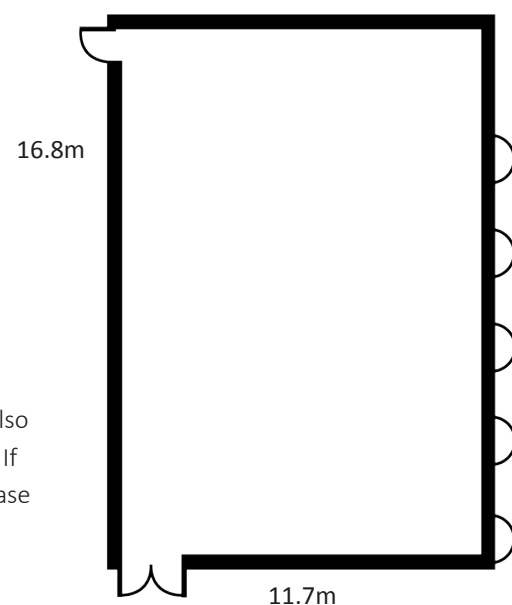
PRODUCTION AND TECHNICAL

STANDARD LIGHTING RIG

There will be 4 x DMX controlled LED LX wash lights installed on LX trees at the back of the room this will allow for basic scene changes and a warm/cool wash. Additional lighting equipment requirements are to be detailed in your tech requirements form.

STANDARD AUDIO RIG

The Ballroom has a small PA system, with corded microphone and line-in playback. Additional audio equipment and microphones can potentially be arranged if requested. The Ballroom also has a projection screen and projector. If you intend on using the projector, please ensure this is requested in your tech requirements form.



Gallery SPECIFICATIONS

The Gallery can accommodate up to 80 people in a variety of configurations. The Gallery has four floor-to-ceiling podiums in the center of the room. Examples of configurations include theatre-in-the-round, roaming theatre, traverse, end-on configuration, or cabaret-style table seating configuration.

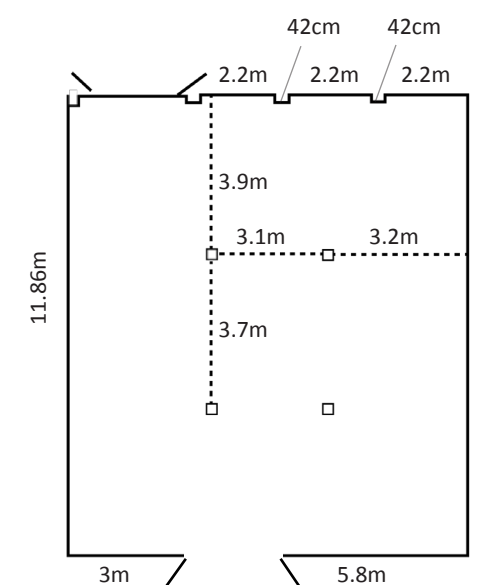
PRODUCTION AND TECHNICAL

STANDARD LIGHTING RIG

There will be 4 x DMX controlled LED LX wash lights spaced around the room for up lighting; this will allow for basic scene changes and a warm/cool wash. Otherwise, the Gallery is equipped with a three-track dimmable LED lighting system. Additional lighting equipment requirements are to be detailed in your tech requirements form.

STANDARD AUDIO RIG

The Gallery will have a small PA system, with corded microphone and line-in playback. The Gallery also has projector and projector mounting point for projecting on the walls. If you intend on using a projector, please ensure this is requested in your tech requirements form.





THE PARLOUR TENT SPECIFICATIONS

The Parlour can accommodate up to 100 people. Its enchanting wooden façade, canvas roof and rich velvet interiors echo a bygone era. There is a single point in the rafters where a rigging point can be attached. The Parlour is ideal for circus, physical theatre, cabaret and late-night festival frivolities.

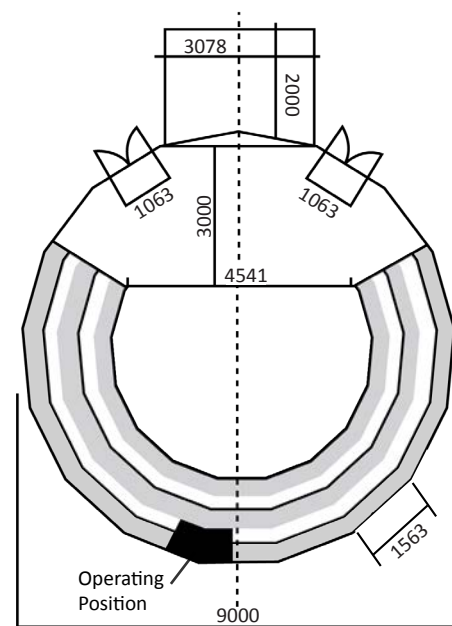
PRODUCTION AND TECHNICAL

STANDARD LIGHTING RIG

There is a standard lighting rig and fixed rigging points; a limited LX wash (warm/cool) will be installed. Additional lighting equipment requirements are to be detailed in your tech requirements form.

STANDARD AUDIO RIG

The Parlour tent a small PA system, with corded microphone, CD and line-in playback. Additional audio equipment and microphones can potentially be arranged if requested.



TECH FAQs



Q: Can we bring our own electrical equipment to be used during our season?

A: Yes! If you would like to bring any additional electrical equipment please ensure this is outlined in your technical requirement form and discussed with our production team prior to arriving onsite. All equipment must have in-date Test & Tags in accordance with AS/NZS 3760 and be inspected by a Bondi Feast technician before it is plugged into mains power.

Q: The Technical Info pack doesn't state there is a projector in our venue. Projection is an integral element to our performance; will we be able to bring a projector into the space?

A: If your theatre does not have a projector installed we will be able to provide a portable projector and tripod screen for projecting onto. It is important that let us know in your technical requirement form that you will require these, and that the content you intend on projecting is emailed to our production team two weeks prior to your scheduled rehearsal time. We would also suggest supplying your own hardware (laptop or playback device) as a backup. If you have any specific projection requirements (full HD resolution or abnormal screen sizes), we recommend bringing your own projector and screen.

Q: We have some very large props that are part of our set design; will we be able to leave these set up between shows?

A: As some theatres have multiple performances in a night it is likely that you will need to pack up and re-install your set after each show, and in a limited window of time. If you do have large set items, please ensure this is communicated in your technical requirement form and that you have enough support to assist with the install and pack down. We will be able to find a storage area between shows, but as the Pavilion is a public space we would recommend any expensive equipment be kept off site to reduce the risk of theft.

Q: Can we use a smoke machine or hazer during our performance?

A: Unfortunately we are unable to use any equipment that may set off smoke alarms inside the Pavilion (this includes the Big Theatre). The only venue in which haze is permitted is the Parlour Tent.

Q: Our show is very cue heavy; can we bring our own operator?

A: Absolutely! While we will still have a technician on hand to assist with any equipment we are supplying, you are very welcome to provide an operator who is already familiar with your show. If your show is cue heavy and you cannot supply an operator, please ensure that your script with cues is sent to our production team early and we will assess

if it's necessary to bring on a second technician. If this is the case, either you can provide your own operator or the extra technician costs will be passed on to your team.

Q: Our show has specific audio cues; can we bring them along on a USB?

A: If you will be providing audio cues please ensure you email all the files to our production team at least two weeks prior to your show start time. You must also bring a back-up copy on a playback device (laptop, mp3 player or phone), as files can be corrupted or formatted incorrectly when copying to a USB. If you require specific software for your show (e.g. Qlab, iTunes) please arrange this with our production team, and bring your own hardware with the software installed as a back-up.

Q: Our performance involves aerial and dangerous acts; will we be able to perform these at Bondi Feast?

A: There is a single point in the rafters of The Parlour; rigging points will need to be attached to this point with shackles. All acts that wish to use this point will need to provide their own rigger with an Advanced Rigging License to sign off on your point and to install the rig prior to your rehearsal times.

All acts with dangerous performances need to be signed off by a safety advisor. Seat allocation for The Parlour may need to change to accommodate for a safety area.





Bondi Feast is part of the Bondi Winter Magic
program, presented by Waverley council.

Find out more about what's happening in
Bondi this winter at

BONDIWINTERMAGIC.ORG.AU